

# Electrify Everything

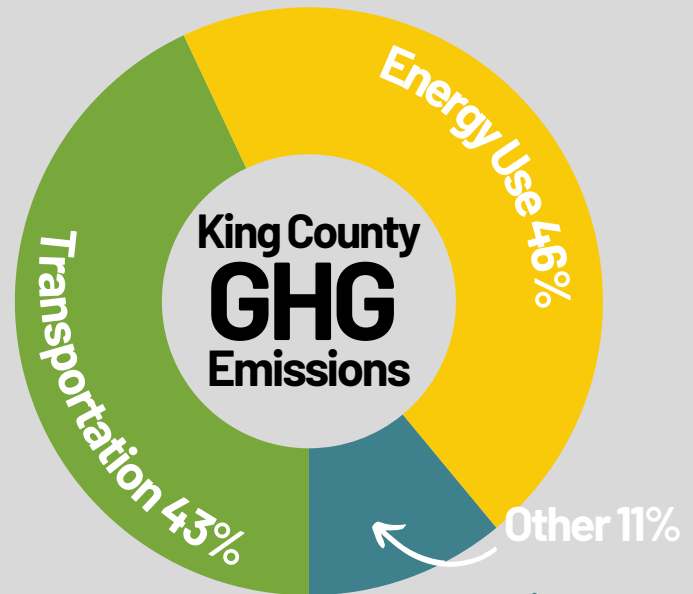
## The Switch is On, Washington!



## You Can Make A Difference.

We know you've heard all about climate change and greenhouse gases. But, what does that mean in your city?

- Hotter, drier summers
- Worse air quality
- More frequent flooding events
- Shrinking snowpack
- Less drinking water
- Loss of iconic species like *salmon*



## What can you do at school?

**Turn Out the Lights Day (T.O.L.D.)** is an annual event to conserve energy school-wide. By turning off non-mission critical lights schools can save **A LOT** of energy without disrupting the school day, contributing to the [Bothell Climate Action Plan's](#) goal to support Washington in reaching its goal of carbon neutrality by 2050.

**That's not far away!** Get T.O.L.D. going at your school using [this campaign](#). Follow the instructions in this template to conserve energy school-wide!

5

community  
service hours

## What can you do at home?

**Individual actions add up to a big impact.** It's time to level up your at-home energy conservation habits. Follow the Guidelines below to help your city tackle climate change and to earn up to

**5 community service hours!**

# How to get Service Hours



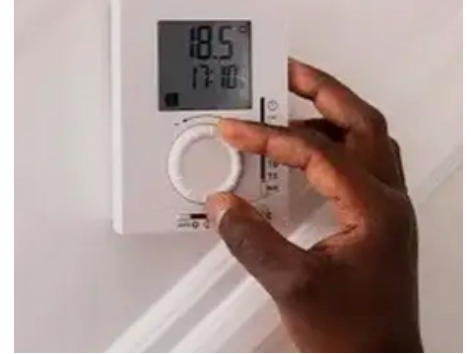
Click on one of our Impact Projects below to get the template. Write up your project, find your stakeholders, follow the procedure, and do the math!



**LEDing the Way**



**Vampire Plug Loads**

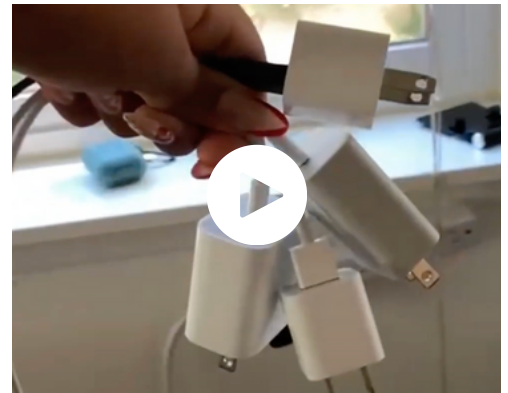


**My Thermostat**



Now, create an Impact Story about your project's results. Review [the project requirements](#) and pick a storytelling style from our [Storytelling Types & Tips](#).

**Need inspo?** Watch [Tanushri's Video](#) on her Vampire Plug Loads Impact Project.



Submit your data, project write up, and your Impact Story using this [Submission Form](#). If it's good, and meets our criteria for impact, we will accept it. We might even publish the best of the best on our website. **Yep, it's that simple to get 5 community service hours!**



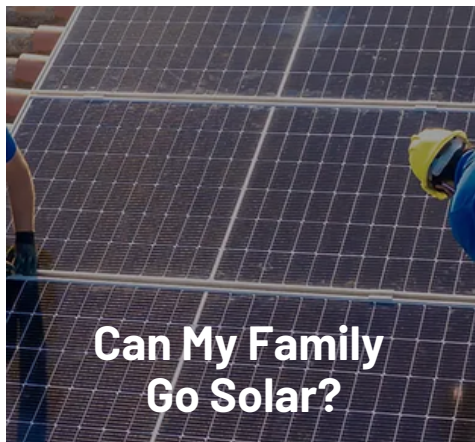
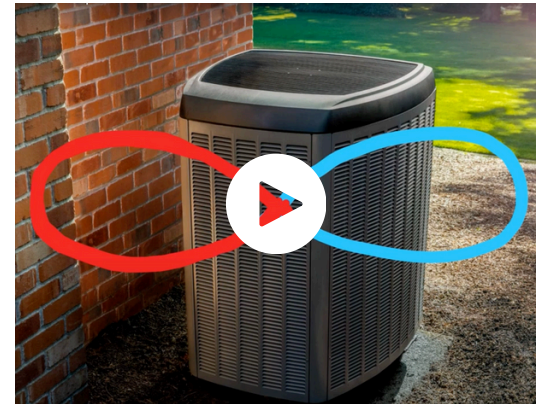
Can I do more than one Impact Project? **Absolutely!** You can find more Impact projects in variety of categories on [our webpage](#).

**5+5+5+5+5**

# Ready to do more? Take some of these **Big Electric Actions**

## **Heat Pumps are Hotcool**

One of the best ways to curb your home's carbon emissions is by going electric. Ditch the dinosaur gas furnace and your air conditioner for an all-in-one solution. Visit [Heat Pump 101](#) and watch [Mckenzie's video](#) to learn about this cool (hot!) technology.



## **Go Solar!**

Switching your home to solar comes with a fantastic return on investment. You end up with free electricity for the rest of your life! Yes, solar works great, even here in the Issaquah. Find your home's solar potential with our impact project [Can My Family Go Solar](#) and learn more at [Solar WA](#).

## **Explore the Switch Is On WA**

The [Switch is On](#) is a great place to find out about all the ways your home can go electric. Explore [their website](#) to find strategies fitting for your home and use their calculator to get your incentives!



## **Invest in Green Power**

Want to start small? Enroll in PSE's [Green Power Program](#) to fund clean energy projects in your local area, starting at **just \$4 a month** added onto your electricity bill. That's less than 1/3 the price of your monthly netflix subscription! Start investing in our local projects and help move us toward a green energy future.